

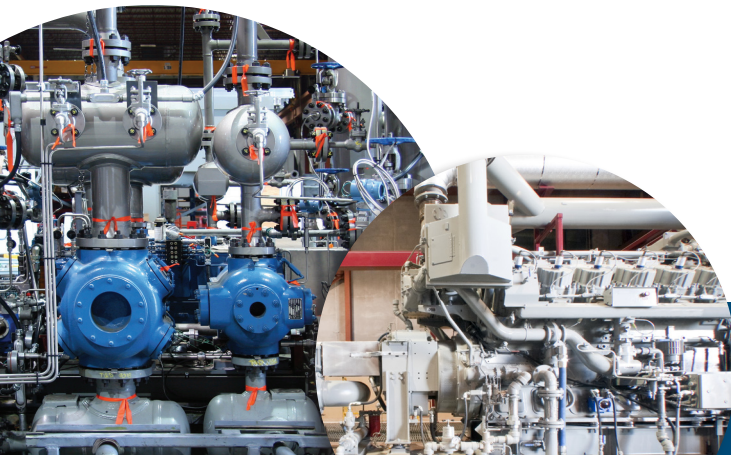
MODEL P55 LUBRICATOR PUMPS



The CPI Model P55 pump is an updated version of the Premier Model P55 designed to retrofit Premier, Mega, McCord and Lincoln* lubricator boxes. Consult CPI for the right pump for your application.

FEATURES

- One piece steel pump body
- Precision roller rocker assembly
- Pyrex sight glass with protective housing
- Precision internal and outlet check valves
- Modular cylinder design
- Weatherproof construction
- Furnished as original equipment by engine, pump and compressor manufacturers



Proven Solutions for the Global Compression Industry™

TECHNICAL SPECIFICATIONS

LUBRICANT TYPE	Mineral Based or Synthetic
OIL VISCOSITY	90 SUS - 8,000 SUS
TEMPERATURE	-20°F to 190°F (-29°C to 88°C)
OPERATING SPEED	4 rpm - 30 rpm
INLET / OUTLET SIZE	CPI 1/8 ORB (1/8 NPT Compatible)
CAMSHAFT SPEED	4 to 30 RPM

Maximum Operating Pressure:

3/16" PUMPS	7,500 psi (51.7 MPa, 517 bar)
1/4" PUMPS	6,500 psi (44.8 MPa, 448 bar)
3/8" PUMPS	3,500 psi (24.1 MPa, 241 bar)



6501800P55V401S

STANDARD PUMPS

Vacuum Pumps

PART NO.	PISTON SIZE	DESCRIPTION
6501800P55V301S	3/16"	P55 vacuum pump
6501800P55V401S	1/4"	
6501800P55V601S	3/8"	

Gravity Pumps

CPI gravity pumps are now designed with an adjustable banjo fitting, reducing the re-tubing necessary to attach the pump to the lubrication system.

PART NO.	PISTON SIZE	DESCRIPTION
650180P55G301AS	3/16"	P55 gravity pump with 1.75" extension, 1/4" tube male connector
650180P55G401AS	1/4"	
650180P55G601AS	3/8"	
650180P55G301BS	3/16"	P55 gravity pump with 1.75" extension & valve kit
650180P55G401BS	1/4"	
650180P55G601BS	3/8"	

Pressure Pumps

PART NO.	PISTON SIZE	DESCRIPTION
6501800P55P301S	3/16"	P55 pressure pump
6501800P55P401S	1/4"	
6501800P55P601S	3/8"	



650180P55G401AS (Front and Back)



650180P55G401BS (Front and Back)



6501800P55P401S

SPECIALTY PUMPS

Pressure Pumps

PART NO.	PISTON SIZE	DESCRIPTION
6501800P55P404S	1/4"	P55 pressure pump with dragging rocker arm
6501800P55P604S	3/8"	
6501800P55P402M	1/4"	P55 pressure pump with pre-installed CPI 1/8" ORB male connector, 1/2 tube
6501800P55P602M	3/8"	
6501800P55P402T	1/4"	P55 pressure pump with pre-installed CPI 1/8" ORB tube adapter, 1/2 tube
6501800P55P602T	3/8"	



6501800P55P404S



6501800P55P402M



6501800P55P402T

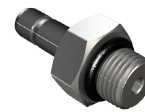
FITTINGS

CPI ORB Fittings

PART NO.	DESCRIPTION
65005000042MCOR	Tube Adapter Fitting, Custom 1/8" ORB X 1/4" Tube
65005000082MCOR	Tube Adapter Fitting, Custom 1/8" ORB X 1/2" Tube
65005000042TAOR	Tube Adapter Fitting, Custom 1/8" ORB X 1/4" Tube Stub
65005000082TAOR	Tube Adapter Fitting, Custom 1/8" ORB X 1/2" Tube Stub
6500522EXTOR175	1.75 Adapter, CPI 1/8" ORB Male X CPI 1/8" ORB Female



65005000042MCOR



65005000042TAOR



6500522EXTOR175

LEGACY CROSS REFERENCE

OLD PUMP	NEW PUMP	OLD PUMP	NEW PUMP	OLD PUMP	NEW PUMP
650010000091200	6501800P55V401S	650010000091228	650180P55G401AS	650010000092405	6501800P55V301S
650010000091201	6501800P55V601S	650010000091229	650180P55G601AS	650010000092802	6501800P55P402M
650010000091202	6501800P55P401S	650010000091230	650180P55G401AS	650010000092803	6501800P55P602M
650010000091203	6501800P55P601S	650010000091231	650180P55G601AS	650010000093316	6501800P55P402T
650010000091204	650180P55G401BS	650010000091490	650180P55G401BS	650010000093317	6501800P55P602T
650010000091205	650180P55G601BS	650010000091502	650180P55G401BS	650010000093806	6501800P55V401S
650010000091206	650180P55G401AS	650010000091503	650180P55G601BS	650010000093854	6501800P55P404S
650010000091207	650180P55G601AS	650010000091504	650180P55G601BS	650010000093855	6501800P55P604S
650010000091208	650180P55G401AS	650010000091580	OBSOLETE	650010000091200E	6501800P55V401S
650010000091209	650180P55G601AS	650010000091616	OBSOLETE	650010000091201E	6501800P55V601S
650010000091210	650180P55G401AS	650010000091617	OBSOLETE	650010000091202E	6501800P55P401S
650010000091211	650180P55G601AS	650010000092003	6501800P55V301S	650010000091203E	6501800P55P601S
650010000091213	6501800P55P404S	650010000092018	OBSOLETE	650010000091213E	6501800P55P404S
650010000091214	6501800P55P604S	650010000092079	OBSOLETE	650010000091214E	6501800P55P604S
650010000091215	OBSOLETE	650010000092086	6501800P55P301S	650010000091220E	6501800P55V401S
650010000091217	OBSOLETE	650010000092105	OBSOLETE	650010000091221E	6501800P55V601S
650010000091220	6501800P55V401S	650010000092168	650180P55G301BS	650010000091222E	6501800P55P401S
650010000091221	6501800P55V601S	650010000092169	650180P55G301AS	650010000091223E	6501800P55P601S
650010000091222	6501800P55P401S	650010000092280	OBSOLETE	650010000092003E	6501800P55V301S
650010000091223	6501800P55P601S	650010000092281	OBSOLETE	650010000092086E	6501800P55P301S
650010000091224	650180P55G401BS	650010000092282	OBSOLETE	650010000093316E	6501800P55P402T
650010000091225	650180P55G601BS	650010000092375	6501800P55P301S	650010000093317E	6501800P55P602T
650010000091226	650180P55G401AS	650010000092376	6501800P55P401S		
650010000091227	650180P55G601AS	650010000092377	6501800P55P601S		

CPI, an EnPro Industries company, is an industry-leading manufacturer of precision-engineered components for reciprocating compressors used in petrochemical, refining, natural gas, and offshore industries. The CPI product range includes packing, piston and rider rings and a complete line of compressor valves designed to provide each customer with maximum performance and reliability for their application. In addition, CPI offers the highest quality lubrication system technology for further compressor efficiency and protection.



Proven Solutions for the Global Compression Industry™