



A Filtration Group Company

JPME 5519-10

JPME 5519-10 dry gas filter cartridges are high efficiency filter elements specifically designed for the removal of solid particulate contaminants in critical applications.

The JPME 5519-10 is mechanically bound with robust tin plated steel end caps and components designed specifically for the demands of the oil and gas industry. The filtering media is then attached to the end caps and core via a highly resistant adhesive to prevent any possibility of by-pass. Tin plated steel outer cartridge encasements are designed to protect against erosion caused by high flow rates.

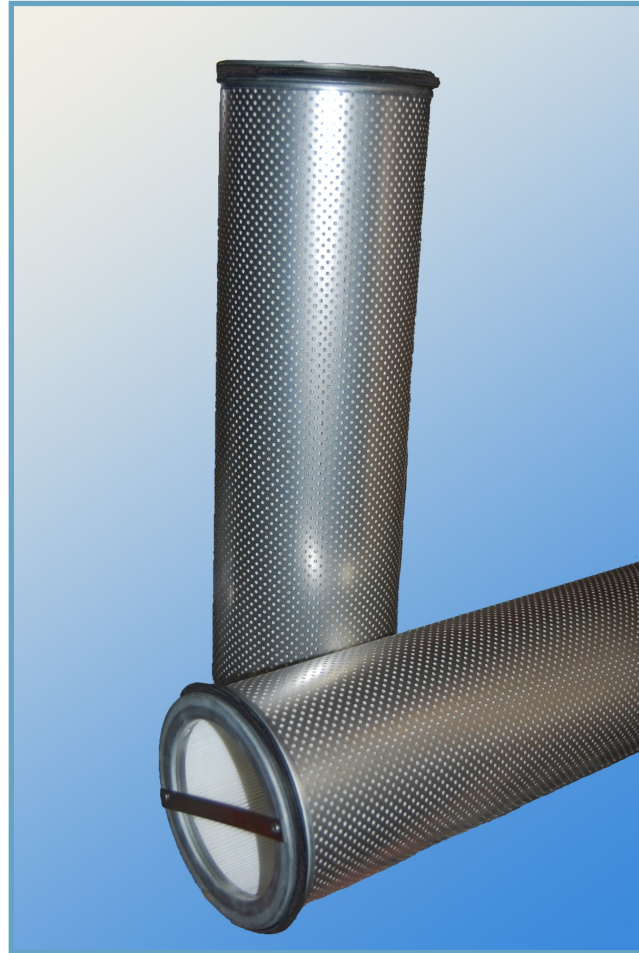
Performance

Micron Rating	10μ at 99.9% efficiency
Recommended Initial DP	< 2.0 psid
Recommended Change-Out DP	15 psid
Maximum Operating Temperature	240°F
Flow Direction	Inside to Out
Configuration	Single Open End

Materials

Media:	Polyester
Core:	None
Supports:	Tinned Steel
End Caps:	Tinned Steel
Gaskets:	Buna N

Jonell
900 Industrial Pkwy P.O. Box 1092
Breckenridge Texas 76424 USA
Telephone: 254-559-7591
Fax: 254-559-9863
sales@jonellinc.com



JPME 5519-10 Liquid Filter Cartridges

Dimensions

Length	19 inches
Outside Diameter	5.64 inches
Inside Diameter	4.24 inches
Flow Pattern	Inside to Out
Quantity	6 per box
Approx. Shipping Wt.	17 lbs. per box
Box Dimensions	12.5" x 18.5" x 22.5"

**Above dimensions are nominal in inches*

Visit us at www.jonellinc.com

For questions about filtration applications, replacement needs or help troubleshooting process and filtration issues contact an approved JONELL representative.

ISO 9001:2008